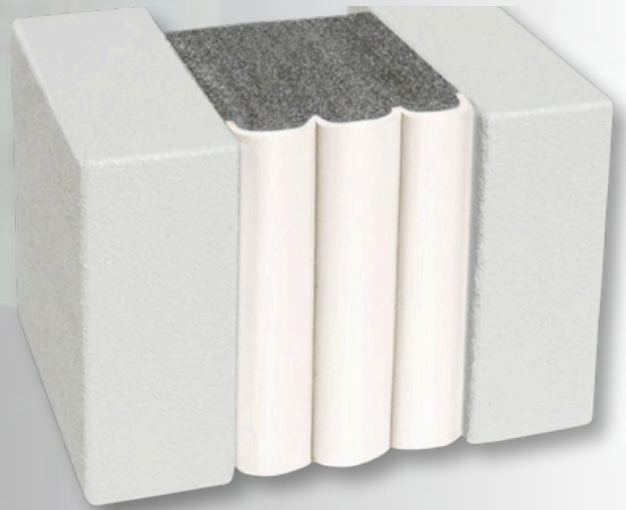


Chemseal EJ

High-performance elastomeric PU-based sealant designed for filling expansion joints and cracks in concrete surfaces.



Product Description

Chemseal EJ is a high-performance sealant formulated for filling cracks in horizontal concrete surfaces and sealing of various movement joints on the floor.

Uses

For Concrete driveways, parking lots, patios, sidewalks, expansion joints and more...

Salient Features

- Outstanding flexibility – remains flexible even at temperatures below 0°C.
- High solids formula for less shrinkage
- Chloride ingress resistance
- Waterproof
- UV resistance
- Paintable, Self-leveling
- Excellent adhesion
- 2k system ensures complete curing



CHEMICAL RESISTANCE

Excellent resistance is observed against distilled water, detergent solutions, dilute alkalis, and dilute acids.

Chemseal EJ

Mechanical /Physical properties

Property	Test Method	Value and Unit
Mixing Ratio	NA	Pre weighed kit of 1lit and 4lit
Finish	CPI* 1001	Semi-gloss
Pot Life @ 25oC	40,5	38,5
Surface Dry	CPI 1002	60 minutes
Hard Dry [Open for foot traffic]	CPI 1002	8Hours
Full Cure [Vehicular Movement]	CPI 1002	24 Hours
Short Circuit Current (Isc/A)	CPI 1002	72 Hours
Coverage in linear meter per litre	CPI1009	2.5 meter for a groove of 2cm depth X 2cm width
Movement accommodation factor	ASTM C 719	± 35%
Shore Hardness	ASTM D 2240	Shore A 40-45
Shelf Life	-	12 months in original unopened Container when stored between 10- 30o C

Method of Application

1. Surface preparation:

Grind the substrate with a wire brush or other suitable equipment, and remove dust and friable particles. Clean the surface with a vacuum. Ensure that the surface is free of contaminants like oil, grease, etc.

2. Priming:

Priming is usually not necessary. Most substrates only require priming if testing indicates a need. Consult Chemsol solution experts for additional information.

3. Backer rod installation:

Insert a fitting backer rod to the required depth. The diameter of the backer rods should be 20 –30% larger than the joint width. Use a blunt tool to insert the backer rod, taking care that the backer rod is not damaged.

4. Sealant application:

Pour part B into part A in a container and thoroughly mix for 3 minutes until a homogeneous mass is obtained. Fill the joint with sealant, avoiding air entrapment. Remove excess material and clean the soiled floor with thinner PUT502.

5. Cleaning of tools:

Clean all tools and application equipment with thinner PUT502 immediately after use. Hardened and/or cured material can only be removed mechanically.

6. Packing:

Chemseal EJ Resin and Hardener are available in a pre-measured kit of 4 liters and 1 liter.

7. Storage conditions:

Store in dry and covered shed between 200 °C to 30 °C away from sources of heat and naked flame.

8. Handling & Safety

Keep the containers tightly sealed when not in use. Avoid skin contact and inhalation of fumes (if any). While spraying it is advised to wear a mask. If it comes in contact with the body, wash affected parts with plenty of water. In case of persistent irritation, contact a physician.

Disclaimer: The Information provided is based on our experience, thorough investigations & sophisticated testing methods, but due to the vast number of applications and usage methods, Chemsol Polymer Industries cannot accept responsibility of any kind for any particular result. It is the responsibility of the user to verify the suitability of the product for their end use and in accordance with the rules and regulations of that country /territory. All information provided pertaining to our products should be treated only as a guidance tool without any guarantee or warranty of any sort.

Factory Address:

Plot No. C93, MIDC, Additional
Jejuri, Tal: Purandar, District, Pune,
Maharashtra, India. PIN: 412303

Correspondence Address:

Office No. 101, G wing, KK
Market, Dhankawadi, Pune-
411043.

Enquiry:

Mobile: +91-7720002824 | 020-24371247
For Sales: sales@chemsolpoly.com
For Materials: purchase@chemsolpoly.com