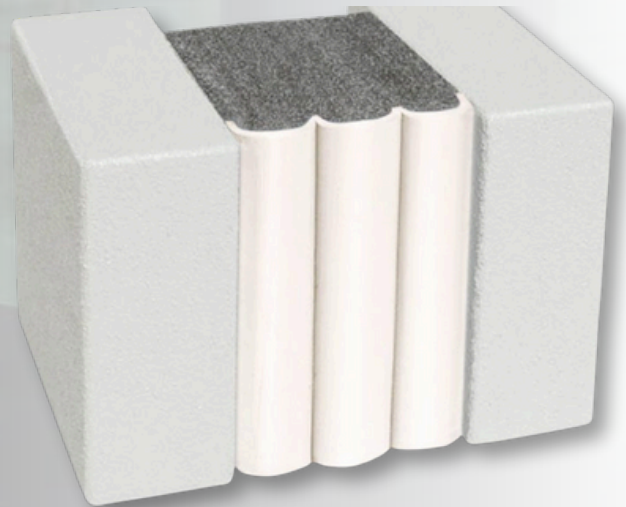


Chemseal EJ pu

1-component high-performance elastomeric PU-based sealant designed for filling expansion joints and cracks in concrete surfaces.



Product Description

Chemseal EJ is a high-performance sealant formulated for filling cracks in horizontal concrete surfaces and sealing various movement joints on the floor. It has excellent UV, weather, and temperature resistance. It has excellent adhesion over a wide variety of substrates.

Uses

For Concrete driveways, parking lots, patios, sidewalks, expansion joints and more...

Salient Features

- outstanding flexibility – remains flexible even at temperatures below 0°C.
- High solids formula for less shrinkage
- Chloride ingress resistance
- Waterproof
- UV resistance
- Paintable, Self-leveling
- Excellent adhesion
- Fast curing

Chemical resistance

Excellent resistance is observed against distilled water, detergent solutions, dilute alkalis, and dilute acids.

Mechanical /Physical properties

Property	Test Method	Value and Unit
Mixing Ratio	NA	Pre weighed kit of 1lit and 4lit
Finish	CPI* 1001	Semi-gloss
Pot Life @ 25 °C	CPI 1002	60 minutes
Surface Dry	CPI 1002	½ Hours
Hard Dry [Open for foot traffic]	CPI 1002	24 Hours
Full Cure [Vehicular Movement]	CPI 1002	72 Hours
Coverage in linear meters per litre	CPI1009	2.5 meter for a groove of 2cm
Elongation at break	>400%	depth X 2cm width ASTM D 412
Movement accommodation factor	ASTM C 719	± 25%
Shore Hardness	ASTM D 2240	Shore A 40-45
Shelf Life	-	12 months in original unopened Container when stored between 10- 30 °C

Method of Application

1. Surface preparation:

Grind the substrate with a wire brush or other suitable equipment, and remove dust and friable particles. Clean the surface with a vacuum. Ensure that the surface is free of contaminants like oil, grease, etc.

2. Priming:

Insert a fitting backer rod to the required depth. The diameter of the backer rods should be 20 –30% larger than the joint width. Use a blunt tool to insert the backer rod, taking care that the backer rod is not damaged.

3. Backer rod installation:

- Sealant application
- Fill the joint with sealant, avoiding air entrapment. Remove the excess material and clean the soiled floor

4. Sealant application:

Clean all tools and application equipment with thinner PUT502 immediately after use. Hardened and/or cured material can only be removed mechanically.

5. Cleaning of tools:

Chemseal EJ Resin and Hardener are available in pre pre-measured kit

6. Packing:

Store in a dry and covered shed between 20 °C to 30 °C away from sources of heat and naked flame.

7. Storage conditions:

Keep the containers tightly sealed when not in use. Avoid skin contact and inhalation of fumes (if any). While spraying, it is advised to wear a mask. If it comes in contact with the body, wash affected parts with plenty of water. In case of persistent irritation, contact a physician.

Disclaimer: The Information provided is based on our experience, thorough investigations & sophisticated testing methods but due to vast number of applications and usage methods Chemsol Polymer Industries cannot accept responsibility of any kind for any particular result. It is the responsibility of the user to verify the suitability of the product for their end use and in accordance with the rules and regulations of that country /territory. All information provided pertaining to our products should be treated only as a guidance tool without any guarantee or warranty of any sorts.

All CPI test methods are our scientifically designed internal test methods which can be shared upon

Factory Address:

Plot No. C93, MIDC, Additional
Jejuri, Tal: Purandar, District, Pune,
Maharashtra, India. PIN: 412303

Correspondence Address:

Office No. 101, G wing, KK
Market, Dhankawadi, Pune-
411043.

Enquiry:

Mobile: +91-7720002824 | 020-24371247
For Sales: sales@chemsolpoly.com
For Materials: purchase@chemsolpoly.com